

Universe	Professional
Type	Verticality
Category	Connectors
Subcategory	High strength carabiners

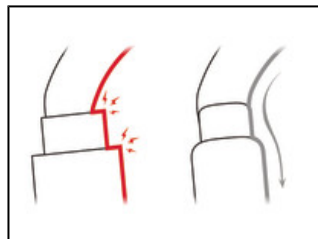


VULCAN

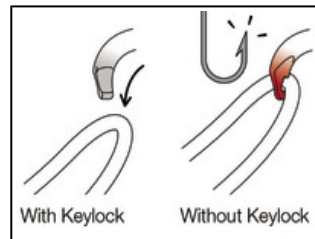
VULCAN is a high-strength steel carabiner designed for use in difficult environments. The large-capacity asymmetrical shape is ideal for setting multiple anchors. The VULCAN carabiner is available in two locking systems: automatic TRIACT-LOCK system or manual SCREW-LOCK system. VULCAN TRIACT-LOCK is available in European or international versions. VULCAN can be connected to the CAPTIV bar to favor positioning of the carabiner along the major axis, to limit the risk of it flipping and to keep it integrated with the device.



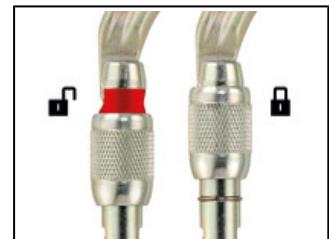
The CAPTIV positioning bar promotes loading of the carabiner along the major axis, reduces the risk of rotation and keeps it integrated with the device.



Fluid interior design of VULCAN carabiners limits the risk of having a catch point and facilitates rotation of the carabiner.



To ensure optimal efficiency, VULCAN carabiners use the Keylock system: the body/gate interface does not have a hook that could snag on anchors, ropes, harness equipment loops...



To facilitate equipment checks, SCREW-LOCK manual locking carabiners have a red band that is visible only when the carabiner is not locked.





Short Description High-strength asymmetrical carabiner with large capacity

Selling Points

- High-strength steel carabiner for use in harsh environments, particularly suitable for setting up multiple anchors
- Easier handling:
 - fluid interior design limits the risk of having a catch point and facilitates rotation of the carabiner
 - Keylock system to avoid any involuntary snagging of the carabiner
 - may be used with a CAPTIV positioning bar to favor loading of the carabiner along the major axis, to keep it integrated with the device, and to limit the risk of it flipping
- H cross-section:
 - ensures an optimal strength/weight ratio
 - protects markings from abrasion
- Two locking systems available:
 - TRIACT-LOCK: automatic locking with triple-action gate opening
 - SCREW-LOCK: the manual screw-lock with red band provides a visual warning when the carabiner is unlocked
- Available in European or international versions
- Also available in black

Specification • Material(s): steel

Specifications by reference

Reference(s)	M073BA00	M073AA00	M073CA00	M073CA01
				
Locking system	TRIACT-LOCK	SCREW-LOCK	TRIACT-LOCK	TRIACT-LOCK
Certification(s)	CE EN 362, NFPA 2500 General Use, EAC, UKCA, GB/T 23469-2009 XF 494-2004	CE EN 362, NFPA 2500 General Use, EAC, UKCA, GB/T 23469-2009 XF 494-2004	CE EN 362, ANSI Z359.12, NFPA 2500 General Use, CSA Z259.12, EAC, UKCA	CE EN 362, ANSI Z359.12, NFPA 2500 General Use, CSA Z259.12, EAC, UKCA
Color(s)	gold	gold	gold	black
Major axis strength	45 kN	45 kN	45 kN	45 kN
Minor axis strength	16 kN	16 kN	16 kN	16 kN
Open gate strength	18 kN	18 kN	18 kN	18 kN
Gate opening	28 mm	29 mm	26 mm	26 mm
Weight	245 g	235 g	265 g	265 g
Made in	TW	TW	TW	TW
Guarantee	3 years	3 years	3 years	3 years
Inner Pack Count	1	1	1	1
Quantity Per Box	20	20	20	20
EAN	3342540821958	3342540821934	3342540821965	3342540821972

Reference(s)	M073AA01
	
Locking system	SCREW-LOCK
Certification(s)	CE EN 362, NFPA 2500 General Use, EAC, UKCA, GB/T 23469-2009 XF 494-2004
Color(s)	black
Major axis strength	45 kN
Minor axis strength	16 kN
Open gate strength	18 kN
Gate opening	29 mm
Weight	235 g
Made in	TW
Guarantee	3 years
Inner Pack Count	1
Quantity Per Box	20
EAN	3342540821941

Related product(s)

- GRILLON anchor
- PAW
- CONNEXION FAST
- CONNEXION FIXE
- CONNEXION VARIO
- SWIVEL
- ANNEAU
- CAPTIV